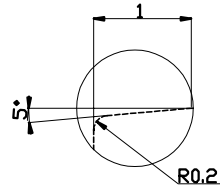
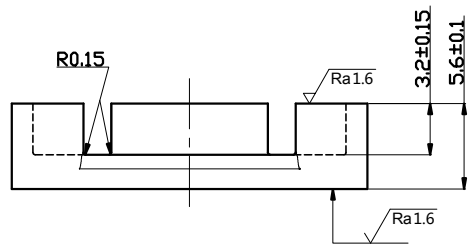
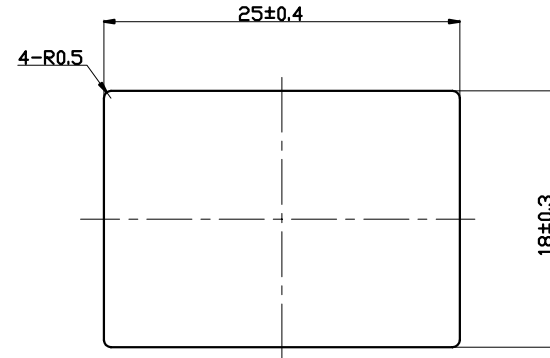
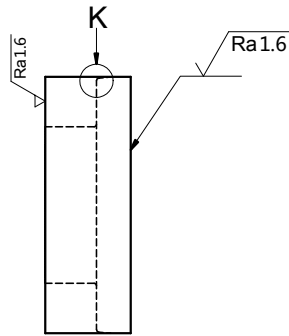
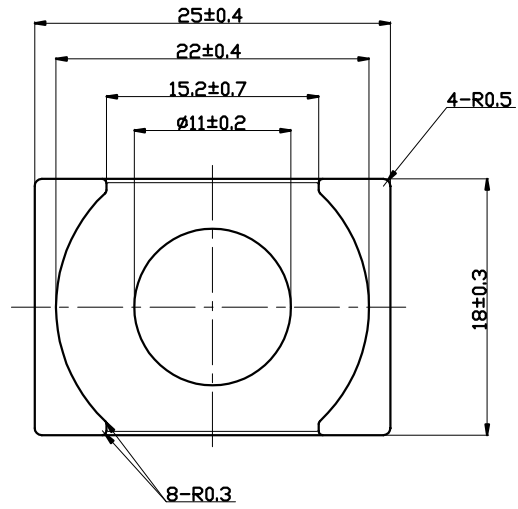
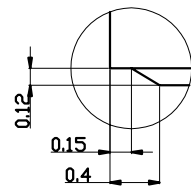
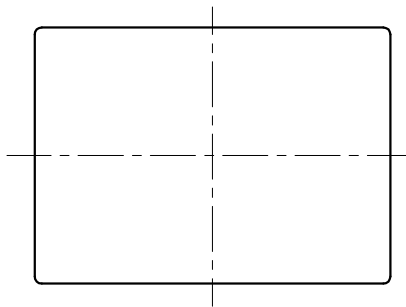
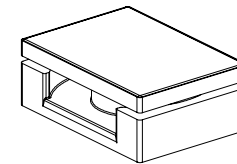


REVISION HISTORY

| Rev | DESCRIPTION | DATE | APPROVED |
|-----|-------------|------|----------|
| | | | |
| | | | |
| | | | |



Detail K



Detail Q

| | | | | | |
|---|---------------------|--------------------|----------------------|-------------|--|
| | Scale | Material | Customer Part number | | |
| | 2 : 1 | | EQ25/LP & PLT25/18/2 | | |
| Unit: | Standard tolerances | Document type | Product Name | | |
| | ±0.1 | | EIR-25-7.9-18 | | |
| Approved by | Created by | Production drawing | Rev | Drawing No. | |
| Y.Higuchi | Z.zhang | | 00 | PY170707M05 | |
| Hitachi Metals (Hong kong) ltd. Panyu Factory | | | Date of issue | Sheet | |
| | | | Jul 07 2017 | 1/1 | |